

# The Green Park

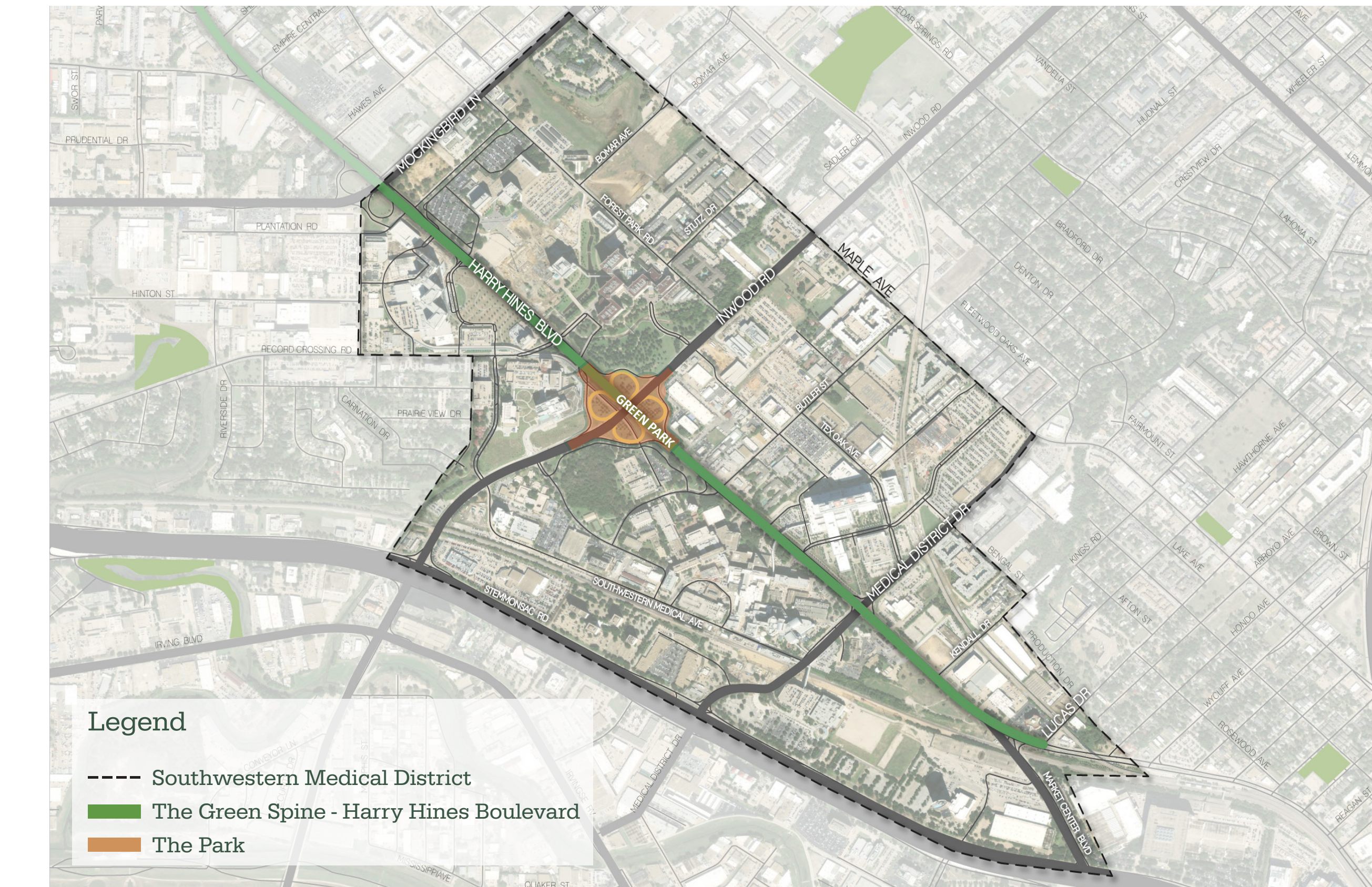
Take the Survey to Learn More!



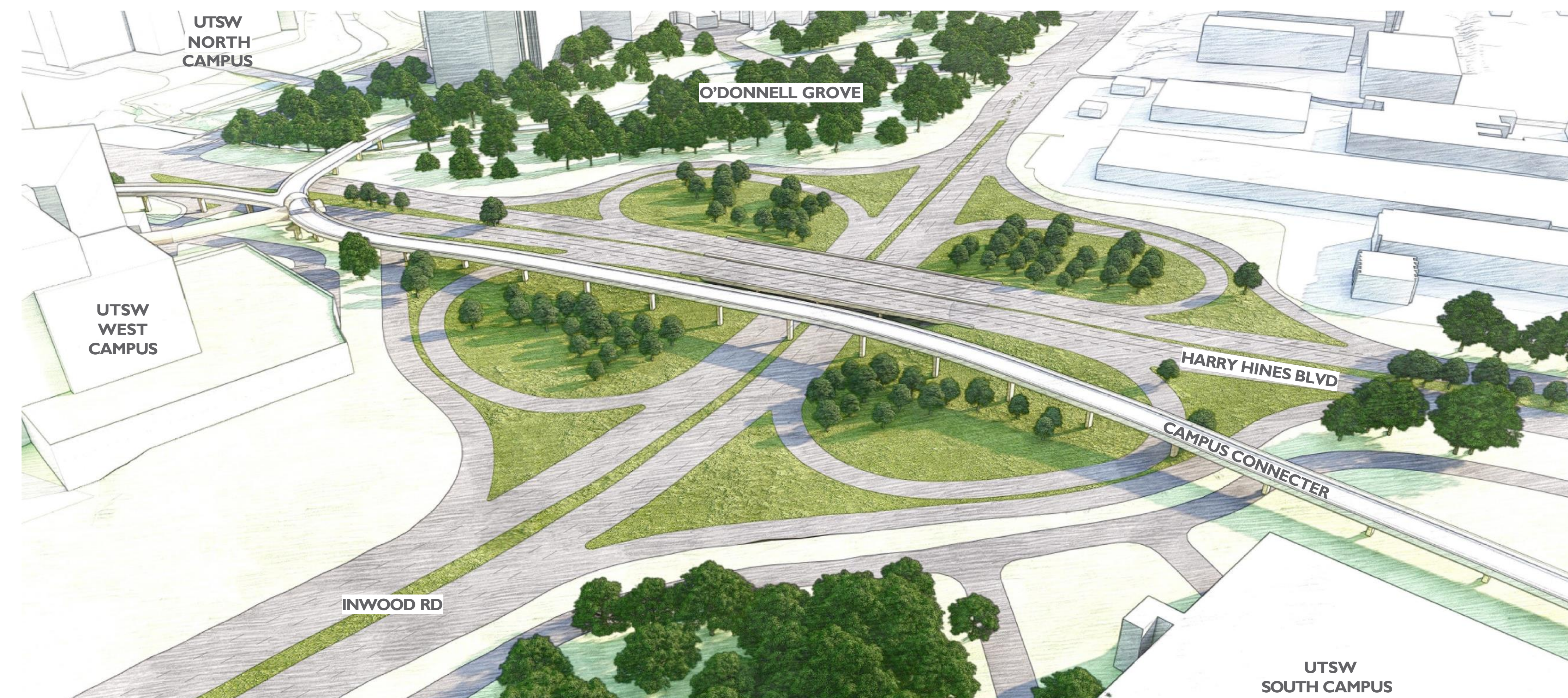
## Green Park Overview

The Green Park is part of the many improvements that is envisioned for the future of the Southwest Medical District. The park is proposed to be built over the **intersection of Harry Hines Boulevard and Inwood Road**. At the center of the District, the park will be an incredible asset that connects and serves the whole Medical District.

Envisioned as the District's **"Green Heart"** the park will be a landmark destination that provides patients, providers, hospital staff and neighbors much needed access to **nature, trails and walking paths, and large open spaces**. More input and feedback is needed from all users to determine the right mix of programming and activities for the park.



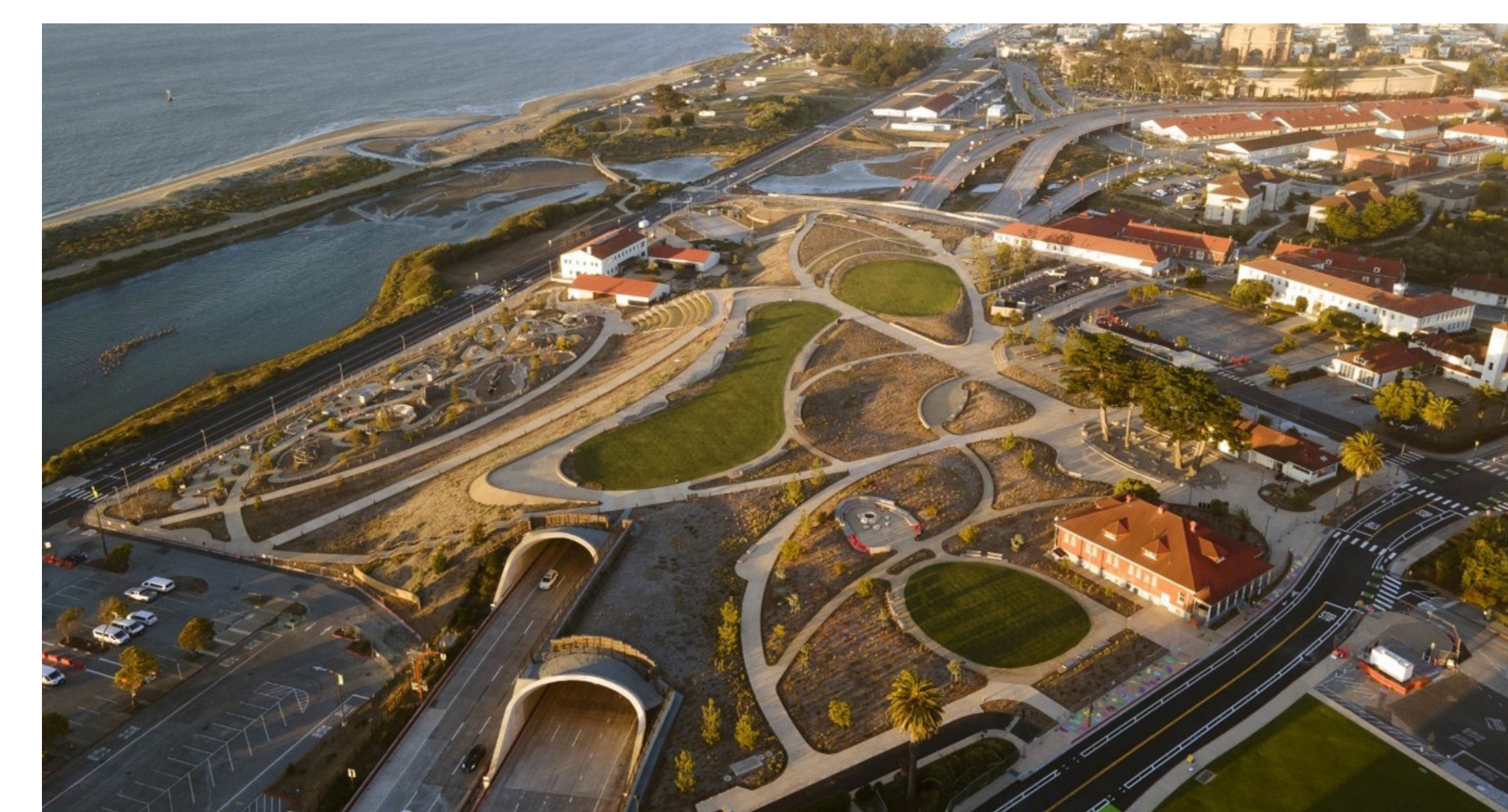
### Existing Conditions



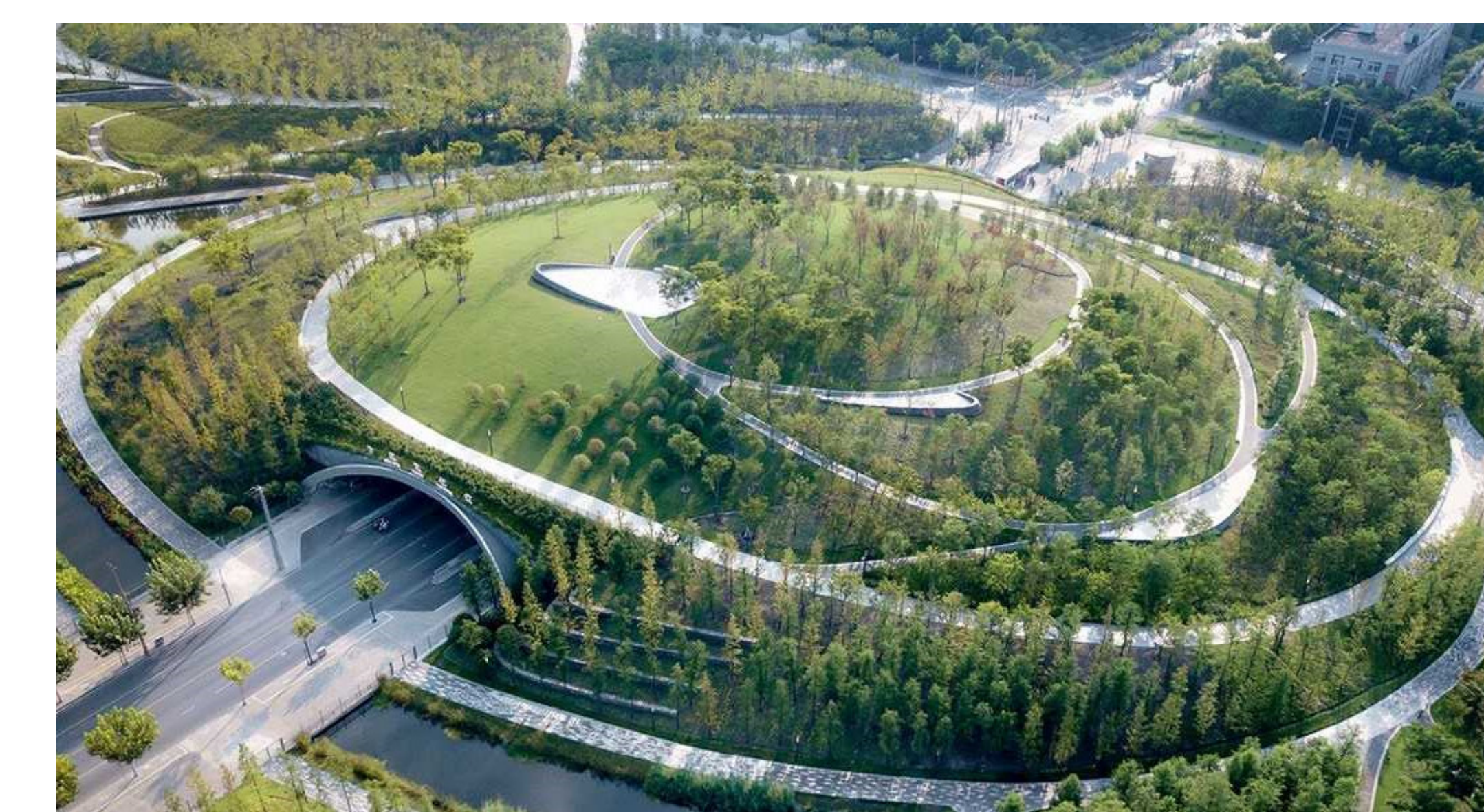
### Proposed reconfigured intersection at Harry Hines Boulevard and Inwood Road



### Cap Park Case Studies



**Presidio Tunnel Tops - San Francisco**  
The 14-acre **"tunnel top"** parkland across San Francisco's historic Presidio bridges over the newly tunneled Presidio Parkway. It is connected through a **series of pathways, bluff landscapes, dynamic overlooks, and social gathering places**.



**Taopu Central Park - Shanghai, China**  
The 237-acre Taopu Central Park is the unifying element and **urban green lung** for Taopu Smart City. The park resonates a **fluid network of pathways, waterways, and topography** to create connections that transform industrial lands to a **living ecosystem**.